

A woman with long dark hair is lying on her side on a bed with white linens and a grey blanket. She is wearing a pink long-sleeved top and is smiling broadly with her eyes closed, resting her head on her hand. Her legs are bent and raised in the air.

MonaLisa Touch

A NOVEL LASER
for Gynecologic Health

MILLIONS OF WOMEN

MAY BE SUFFERING FROM CHANGES
IN THEIR GYNECOLOGIC HEALTH.

but they don't have to





**YOU DESERVE
TO FEEL**
like yourself again

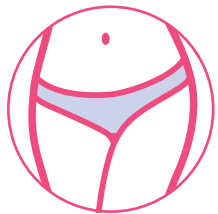
IT'S OKAY

to talk about it

"It" refers to changes in gynecologic health and it happens to many women as they age.

A UNIQUE OPTION

for patients



MonaLisa Touch (MLT) is a fractional CO₂ laser that may help with your gynecologic health.

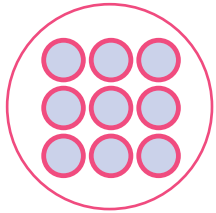
**FOR MILLIONS
OF WOMEN,
MONALISA TOUCH
IS A SIMPLE,
PROVEN LASER
FOR GYNECOLOGIC
HEALTH.**

A NATURAL OPTION



The MonaLisa Touch procedure is hormone-free and does not expose patients to chemicals.

HOW DOES IT WORK?



The MonaLisa Touch laser delivers energy to tissue. This is followed by the body's natural healing response.



MonaLisa Touch

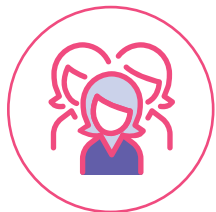
WHAT MAKES IT UNIQUE?



Unlike other lasers, the SmartXide Touch, which is used to deliver the MonaLisaTouch procedure, was designed for gynecologic use to meet the needs of OB/GYN patients.

THOUSANDS OF WOMEN

have chosen MonaLisa Touch



The MonaLisa Touch procedure was first offered globally in 2012 and became available in the US in 2014. You can feel confident knowing that it's a trusted device.

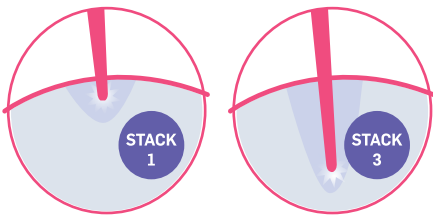
UTILIZED AND RESPECTED

by researchers worldwide



The MonaLisa Touch is a well-studied laser and has been accepted by experts in female pelvic health around the world.

deeper lasing of tissue WITH UNIQUE TECHNOLOGY



The fractional laser technology within the MonaLisa Touch device has proprietary stacking technology, which is a repetitive firing of the laser with more concentrated energy to target deeper levels of the tissue.



what should I
EXPECT?

NON-SURGICAL

in the comfort of the office



The procedure is performed here in our office as a routine outpatient appointment.

A CONVENIENT PROCEDURE

that fits in your schedule



The procedure time is less than 5 minutes and can be scheduled at your convenience.

A SIMPLE PROCEDURE

or a series of them



A short series of laser sessions may be recommended by your physician.

A WELL-TOLERATED

in-office procedure



The MonaLisa Touch procedure typically requires no anesthesia.

MINIMAL DOWNTIME

with few side effects



You can return to normal activities after your laser session but you should refrain from sexual activity for 2- 3 days. Your doctor will determine a post-procedure regimen that is right for you.

CONTINUE LIVING

your life



Most patients resume their routines within a few days of the procedure and side effects are typically mild or unnoticeable in most cases. For a full list of warnings and indications, please see page 20 or visit smilemonalisa.com.







frequently asked
QUESTIONS

HOW LONG

until I can have sex?



It may be recommended that you wait ~2-3 days for any contact in the lased area. Talk with your physician post-procedure.

how long

WILL IT LAST?



Everyone is unique and our skin ages pre and post-procedure. You and your physician should discuss your needs and expectations.

**BOOK AN
APPOINTMENT
TODAY**

you're worth it!

important TO NOTE:

Like all medical procedures, not all patients are suitable for the procedure. Talk to your medical provider who will review the risks and benefits of this procedure with you.

Indications

The SmartXide Touch Laser (MonaLisa Touch) is indicated for incision, excision, ablation, vaporization and coagulation of body soft tissues in medical specialties including aesthetic (dermatology and plastic surgery), podiatry, otolaryngology (ENT), gynecology, neurosurgery, orthopedics, general and thoracic surgery (including open and endoscopic), dental and oral surgery and genitourinary surgery. Use with scanning unit is indicated for ablative skin resurfacing.

Contraindications

SmartXide Touch laser is contraindicated for those patients who:

- Have vaginal, cervical, or other lesions in the target area that have not been evaluated and diagnosed
- Have active vaginal or vulvar infection i.e., (herpes, candida, STDs)
- Pregnant or within 3 months postpartum
- Have vaginal prolapse beyond hymen
- Have history of radiation to vaginal/ colo-rectal tissue
- Have history of reconstructive pelvic surgery with "mesh kits"
- Have a history of impaired wound healing
- Have a history of keloid formation
- Known anticoagulation treatment or thromboembolic condition
- NOTE: A qualified practitioner is solely responsible for evaluating each subject's suitability to undergo a laser procedure and for informing those being lasered about any risks involved with the procedure, pre-and postoperative care, and any other relevant information.

Warnings and Cautions

- WARNING: The SmartXide Touch Laser can cause eye injury. Never use this device without protective eyewear.
- CAUTION: Use of controls, adjustments, or performance of procedures other than those specified herein may result in hazardous radiation exposure. To avoid these hazards, the precautions described in the Operator's Manual must be observed when installing, operating, moving or servicing the system.
- CAUTION: Since the Probe, Ring, and Handpiece may become contaminated with blood, fluids or human tissue, they must be cleaned and disinfected /sterilized after every treatment.
- CAUTION: Laser plume or smoke produced by the laser beam may contain live tissue. Use of a smoke evacuator is advised if plume is present.
- CAUTION: Exceeding the Smart Stack recommended maximum setting increases the risk of collateral thermal injury and increases wound healing time.

Side Effects

- Possible side effects may include: Spotting, mild vaginal bleeding, pink or brown vaginal discharge, mild to profuse watery vaginal discharge, redness, swelling, inflammation, tenderness, itching, irritation, burning upon urination, pinpoint bleeding and discomfort.

MonaLisa Touch®

CYNOSURE®
A Hologic Company

DEKA
Innate Ability

MonaLisa Touch is a registered trademark of DEKA M.E.L.A. Srl – Calenzano – Italy.
Cynosure is a registered trademark of Hologic, Inc. ©2018 Hologic, Inc.
921-7031-408 Rev 001 11/18 PRD-1430